

# Better efficiency for Flue Gas Desulphurization

## Made of SiC

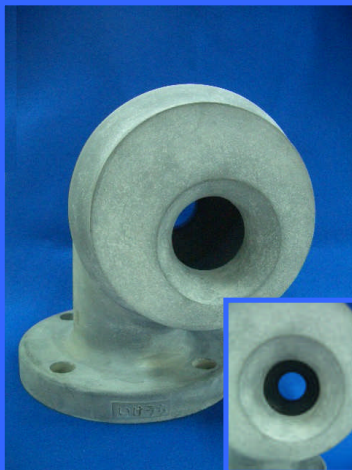
### Bi-directional slurry spray nozzle

**TWAA Series**

#### Features

- High wear-resistance
- Small droplet diameter
- Even spray distribution
- Large free passage diameter

#### Wear-resistant, Lightweight

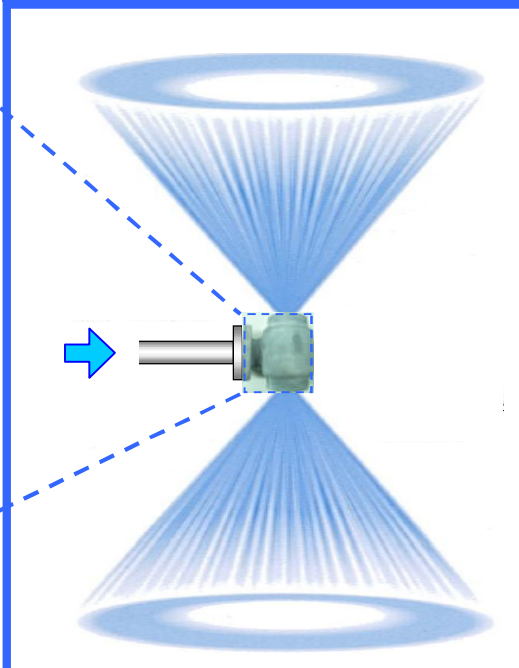


#### Material: SiC

#### **SiC**

(Silicon nitride bonded silicon carbide) has excellent **wear-resistance and chemical durability**. It is also **lightweight**. (Weighs **less than half weight of stainless steel**)

#### Bi-directional spray



The TWAA series is **bi-directional**, so one nozzle unit can take the place of two. The result, **simpler equipment layout**, less maintenance yields **time savings**.

#### Smaller droplets



With 2 orifices, the flow normally sent through 1 orifice is halved, yielding smaller droplets. Best for applications with contact / reactions.

#### **Results!**

**Reliable continuous operation**

*Wear-resistance*

**Easy-maintenance**

*Wear-resistance, Lightweight, Bi-directional (Fewer nozzles)*

**Simpler layout**

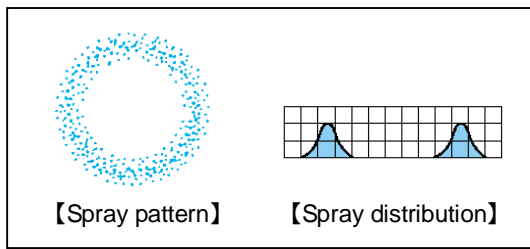
*Lightweight, Bi-directional spray*



"The Fog Engineers"

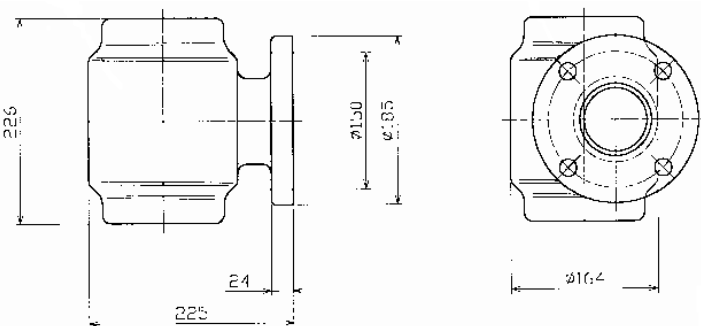
**H. IKEUCHI & CO., LTD.**

## Performance



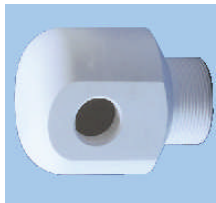

Standard pressure : 0.07MPa  
 Range of flow rates : 200 - 1,200 L/min  
 Flange sizes : 2T - 4T

## Reference drawing



At left is a reference drawing for the 3 inch size. For more detail, please contact your nearest distributor, listed below. After a consultation on your specific needs, we can provide information best suited for you.

## Flue Gas Desulphurization nozzles

Moderate flow rate alumina hollow cone spray nozzle <b>AP-AL92 series (Alumina ceramic)</b>	Large flow rate flanged hollow cone spray nozzle <b>TAA series (Made of SiC, single direction)</b>	Large flow rate flanged hollow cone spray nozzle <b>TAA series (Made of plastic, single direction)</b>
		

Please feel free to contact our local sales office for any question or inquiry.

 "The Fog Engineers"  
**H. IKEUCHI & CO., LTD.**

ISO9001:2008 certified

### Headquarters

Daiichi Kyogyo Bldg., 1-15-15, Awaza  
 Nishi-ku, Osaka 550-0011, Japan  
 Tel: 81-6-6538-4015  
 Fax: 81-6-6538-4022  
 E-mail: [overseas@kirinoikeuchi.co.jp](mailto:overseas@kirinoikeuchi.co.jp)  
 URL: <http://www.kirinoikeuchi.co.jp/eng/>

### IKUCHI (SHANGHAI) CO., LTD.

Room 1311, Building A, North Region Commercial Plaza, 988 Da Tong Road, Zha Bei District, Shanghai 200070, P.R.China  
 Tel: 86-21-6140-9731 Fax: 86-21-6123-4239 E-mail: [mist@kirinoikeuchi.com](mailto:mist@kirinoikeuchi.com) URL: <http://www.kirinoikeuchi.com/>  
 Tianjin Branch Tel: +86-22-2320-1676 Fax: +86-22-2320-1675

### IKUCHI USA, INC.

8110 Beckett Center Drive, West Chester, OH 45069 USA  
 Tel: 1-513-942-3060 Fax: 1-513-942-3064 E-mail: [info@ikeuchiusa.com](mailto:info@ikeuchiusa.com) URL: <http://www.ikeuchiusa.com/>

### IKUCHI EUROPE B.V.

Asterweg 17 A6, 1031 HL Amsterdam, The Netherlands  
 Tel: 31-20-820-2175 Fax: 31-20-820-2176 E-mail: [info@ikeuchieurope.com](mailto:info@ikeuchieurope.com) URL: <http://www.ikeuchieurope.com/>

### Ikeuchi Taiwan Co., Ltd.

11 F-1, No.27, Sec.1, Chung Shan N. Rd., Taipei, 10441 Taiwan, R.O.C.  
 Tel: 886-2-2511-6289 Fax: 886-2-2541-6392 E-mail: [sales@ikeuchi.com.tw](mailto:sales@ikeuchi.com.tw) URL: <http://www.ikeuchi.com.tw/>

### IKUCHI (THAILAND) CO., LTD.

12 Soi Chalemprakiat Rama 9, Soi 30 Yak 24, Kwang Dokmai, Khet Prawet, Bangkok 10250 Thailand  
 Tel: 66-2-328-0392 Fax: 66-2-328-0391 E-mail: [info@ikeuchithai.com](mailto:info@ikeuchithai.com)